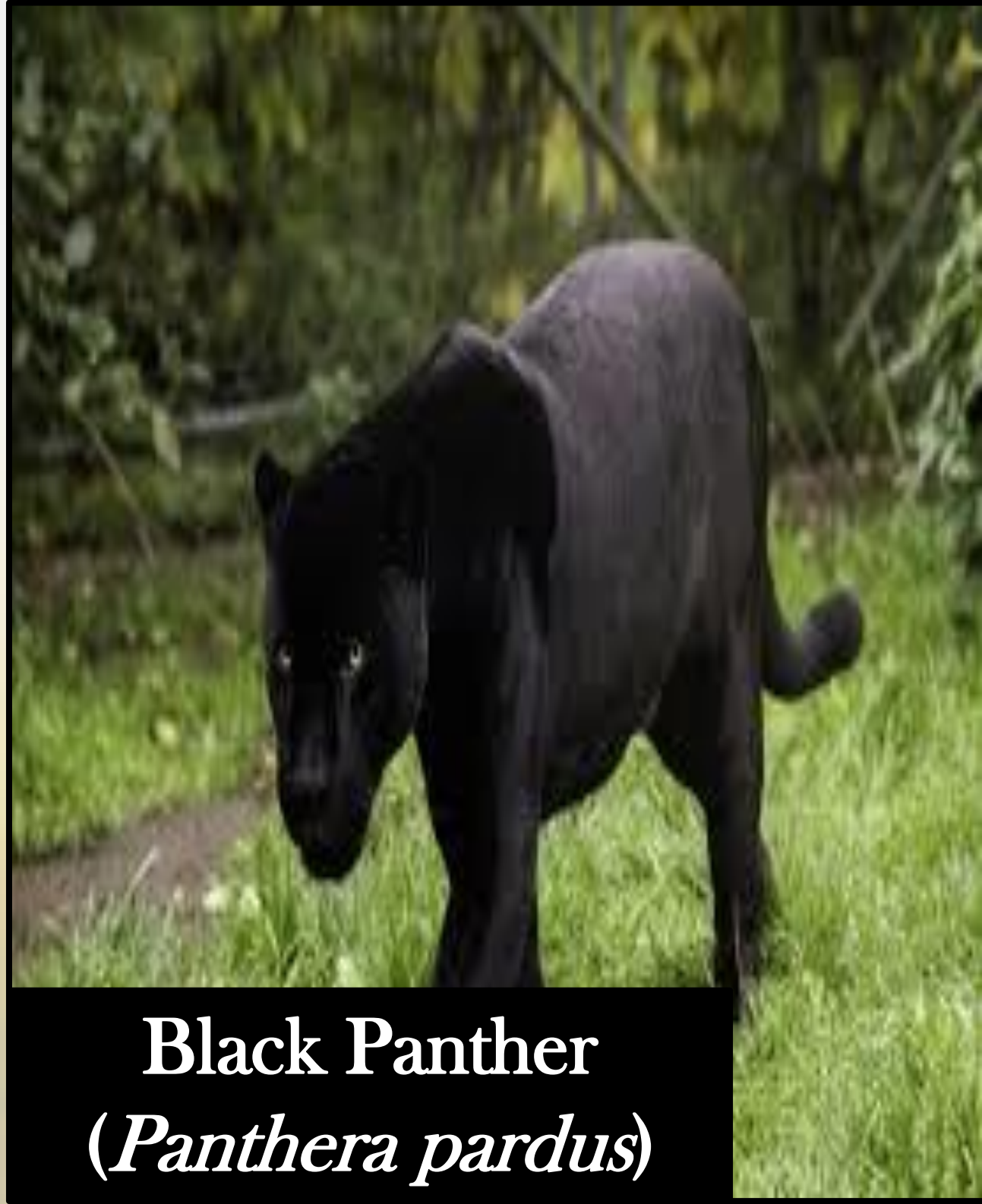


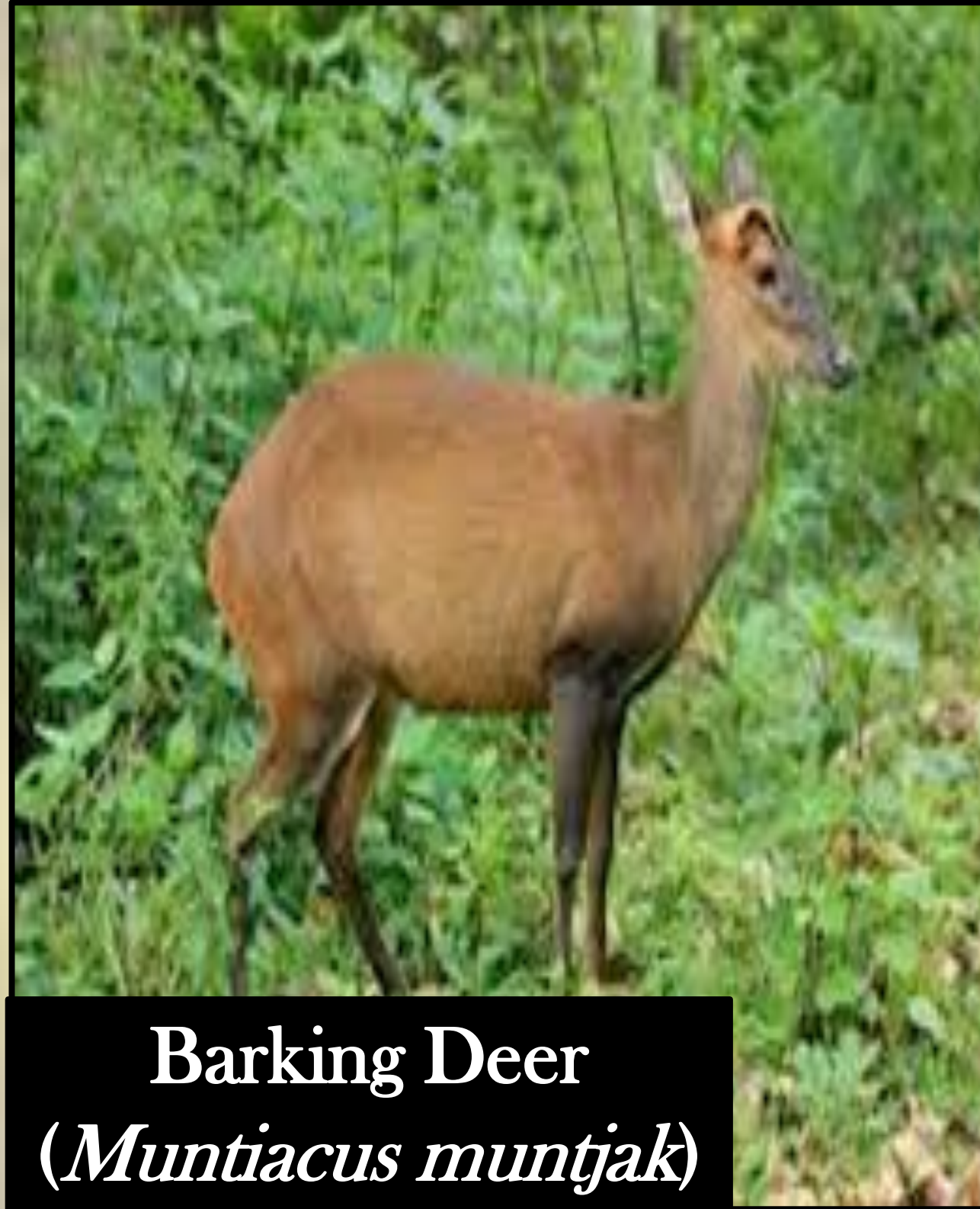
WILDLIFE OF SIRSI TALUK, UTTARA KANNADA

Shrikanth Naik Subashchandran M .D . & Ramachandra T.V.

Energy and Wetland Research Group, Centre for Ecological Sciences, Indian Institute of Science, Bangalore 560012
Email: tvr@iisc.ac.in, Phone: 080 22933099 , Web: <http://ces.iisc.ernet.in/energy>, <http://ces.iisc.ernet.in/biodiversity>



Black Panther
(*Panthera pardus*)



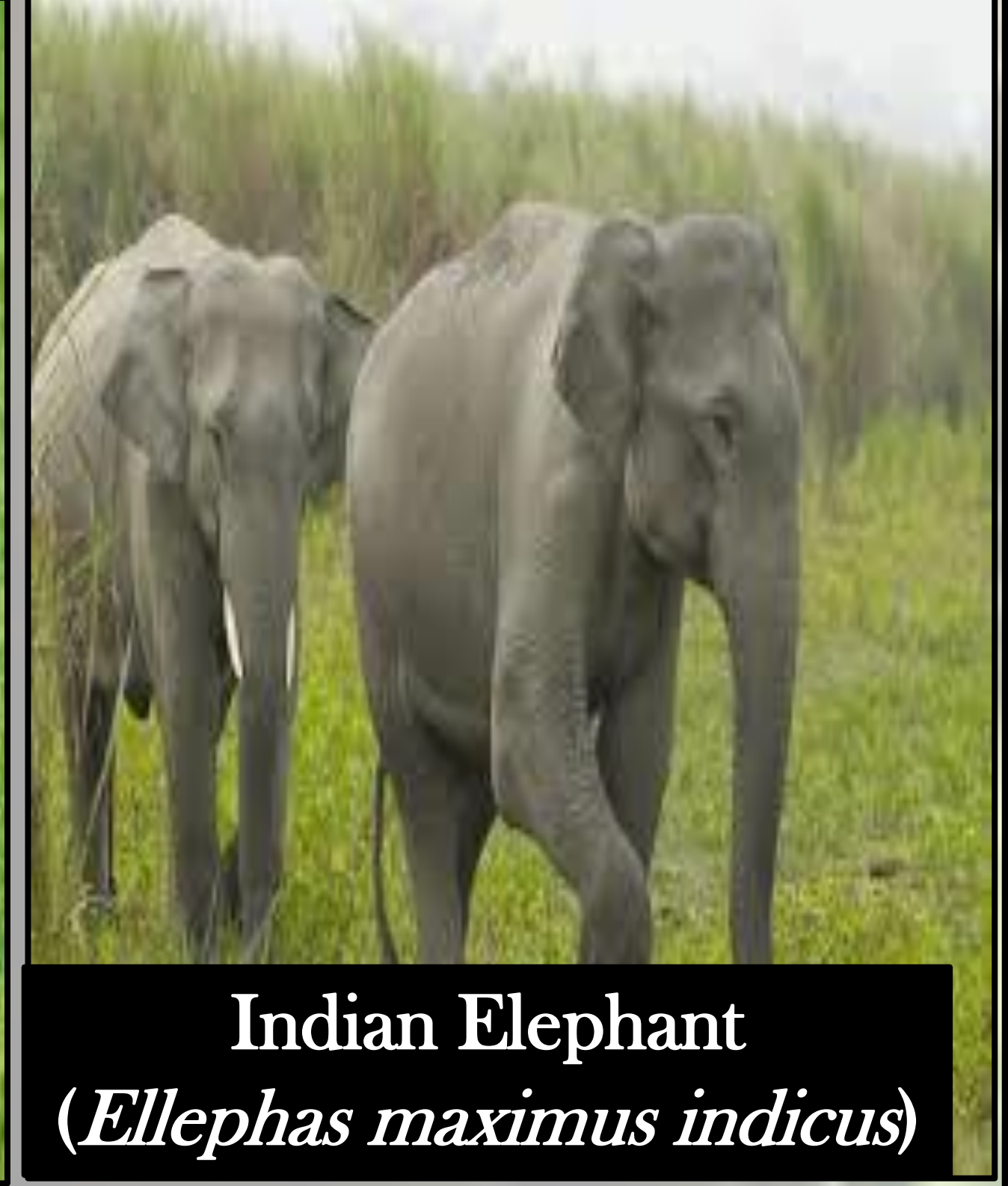
Barking Deer
(*Muntiacus muntjak*)



Malabar giant squirrel
(*Ratufa indica*)



Black-napped hare
(*Lepus nigricollis*)



Indian Elephant
(*Elephas maximus indicus*)

Sirsi is a city in the hilly region of Uttara Kannada district in state of Karnataka.

- Sirsi forest division is situated in the south-western part of Uttara Kannada district bordering Shivamogga district in the west. Consists of 37 gram panchayat and 275 Villages
- The major rivers draining the division are Aghanashini, Varada, Sonda, Dharma and Bedti.
- Sirsi division has three sub-divisions, namely, Sirsi, Janmane and Siddapur sub-divisions, and consists of six ranges, namely, Sirsi, Hulekal, Banavasi, Janmane, Siddapur and Kyadgi ranges.
- Sirsi division harbors different types of forest: deciduous, evergreen, plantation, moist deciduous and grassland in the valleys.
- Climate is strongly influenced by the monsoons, and the climate is tropical, receives one of the heaviest rainfall in the world. As a result, the region also has a large variety of wildlife.
- Wildlife traditionally refers to undomesticated animal species, that grow or live wild in an area without being introduced by humans.

	Elep	B.Pa	M.	G.Sq
Village Name	haa nt	Tig er	nthe r	Bea r
Sonda	-	+	+	+
Devanal	-	+	+	+
li	-	+	+	+
Banavas	+	+	-	+
i	+	+	-	+
Uppalek	+	+	+	+
oppa	+	+	+	+
Sugavi	+	+	-	+
Bislakop	+	+	-	+
pa	+	+	-	+
Aminalli	-	+	+	+
Salkani	-	+	+	+



Gaur
(*Bos gaurus*)



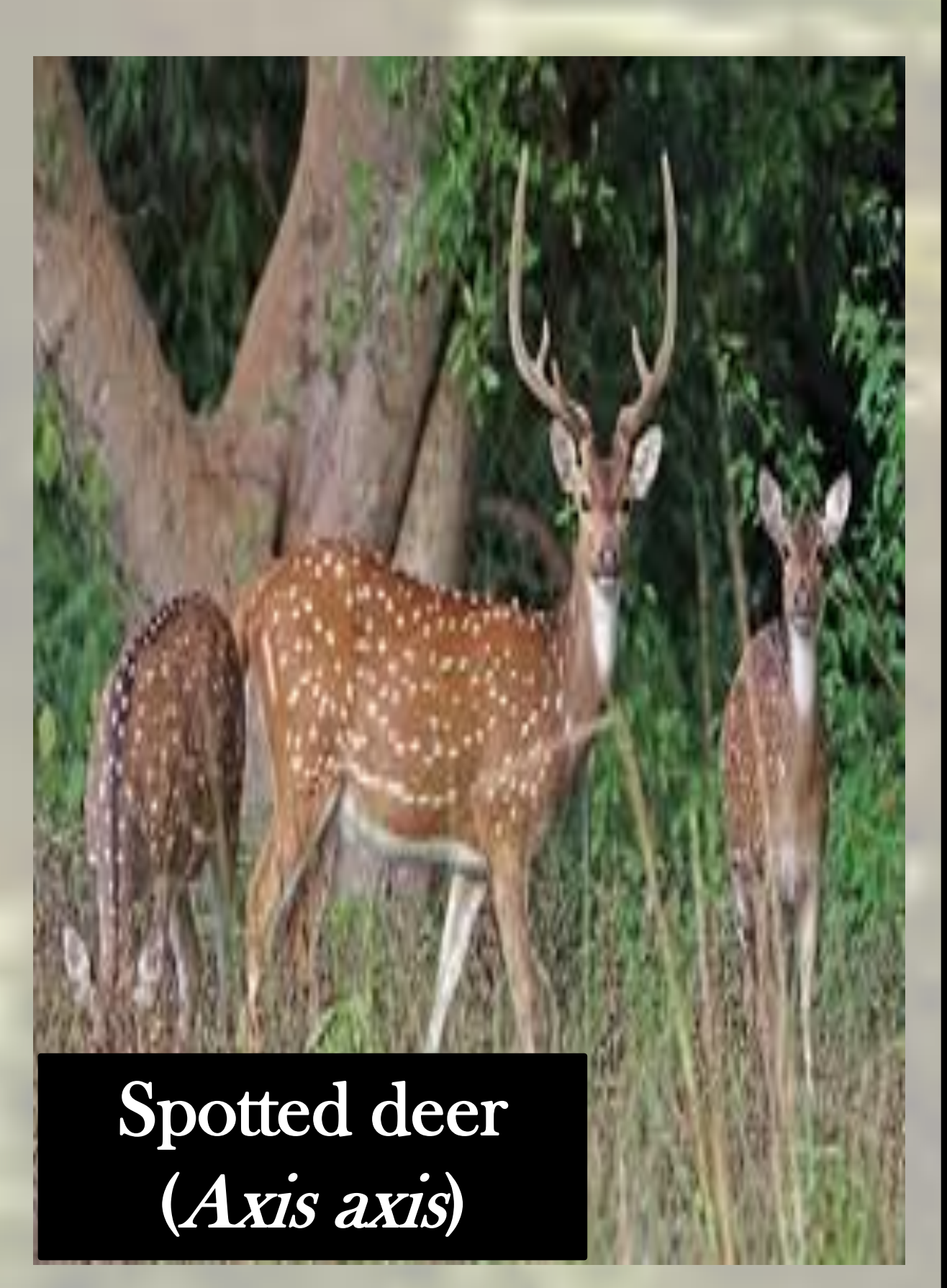
Tiger
(*Panthera tigris*)



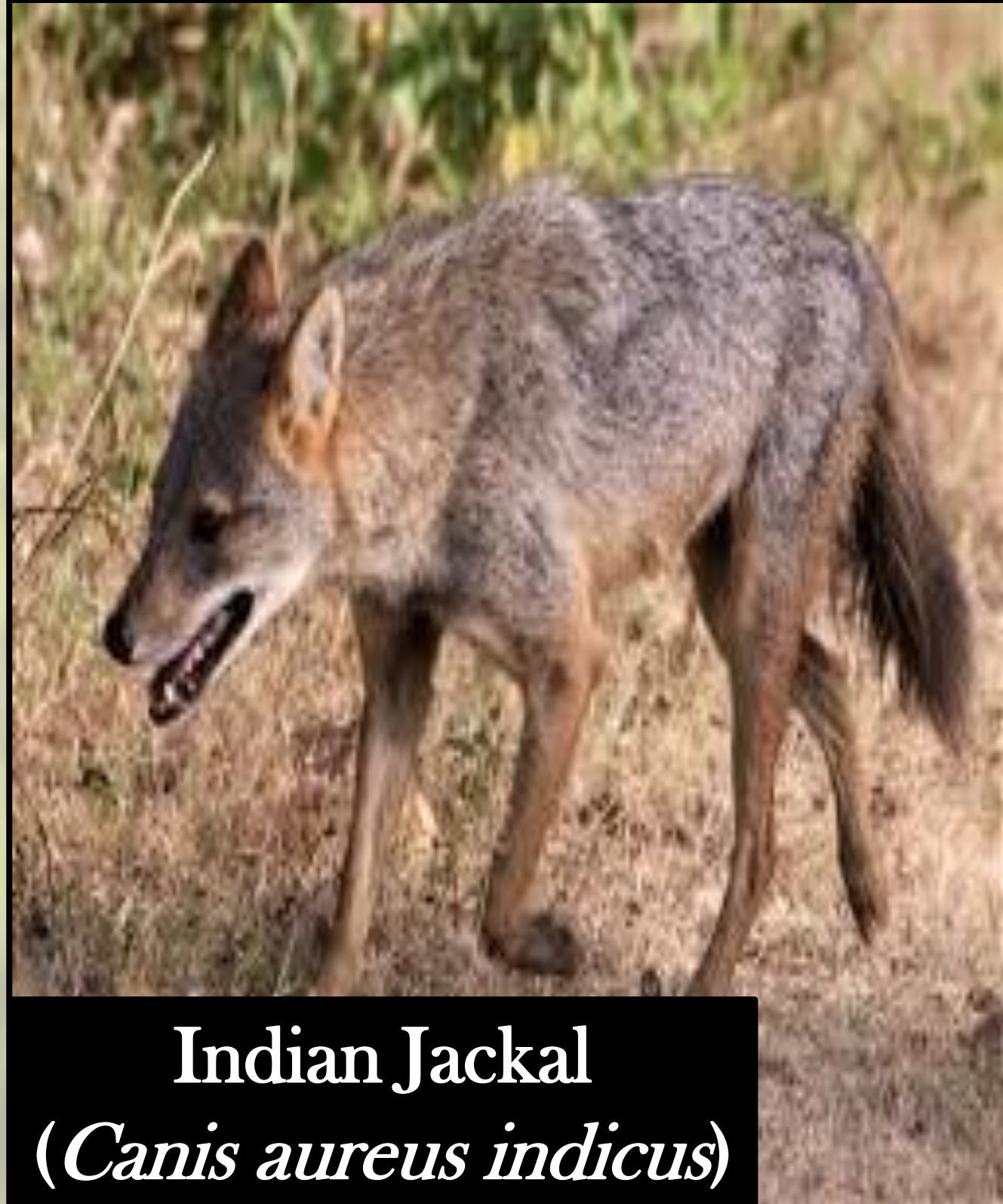
Leopard
(*Panthera pardus*)



Hyena
(*Hyaena hyaena*)



Spotted deer
(*Axis axis*)



Indian Jackal
(*Canis aureus indicus*)



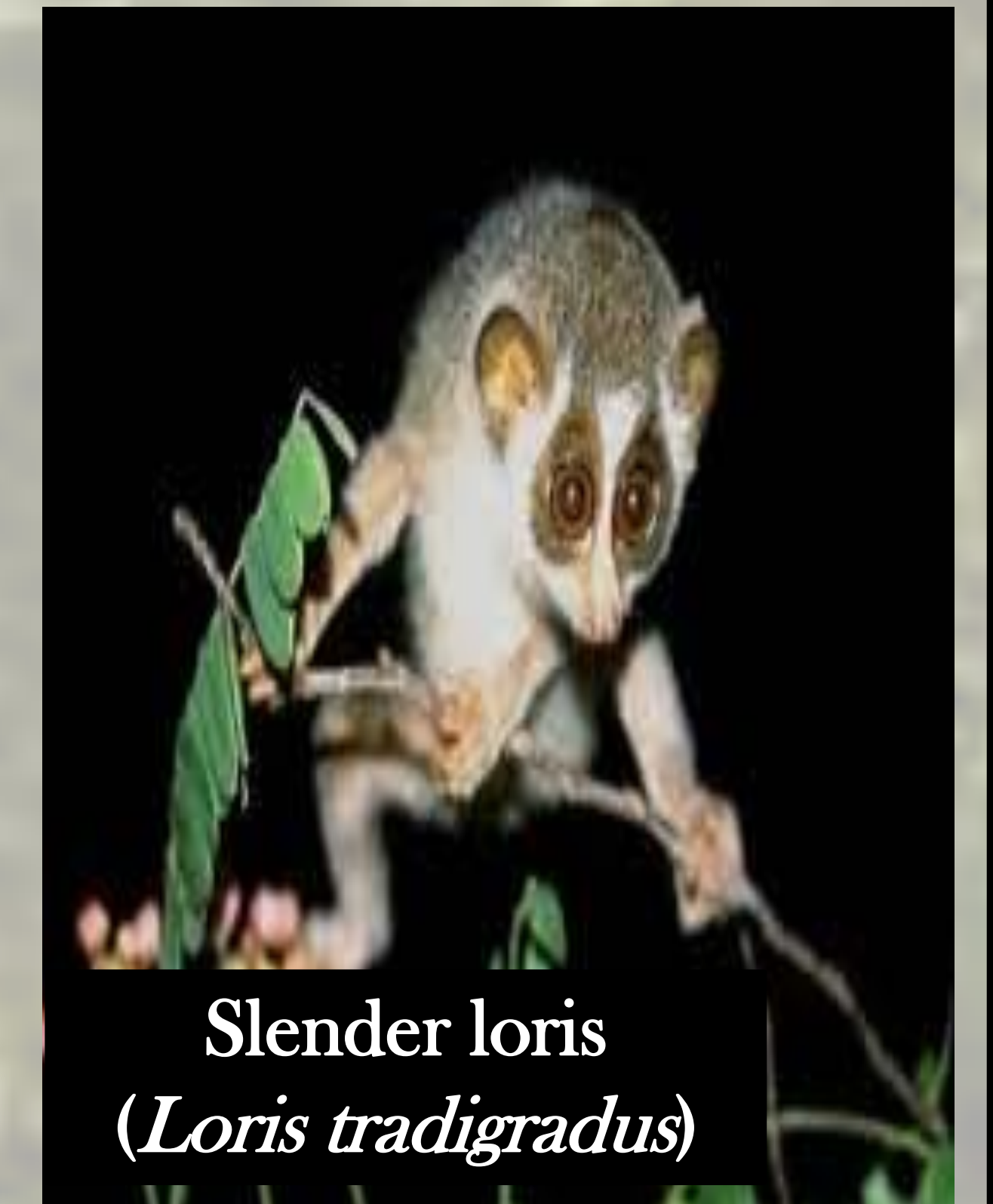
Mouse deer
(*Tragulus tragulus*)



Sloth bear
(*Melursus urilus*)



Flying Lizard
(*Pteromyini*)



Slender loris
(*Loris tradigradus*)

